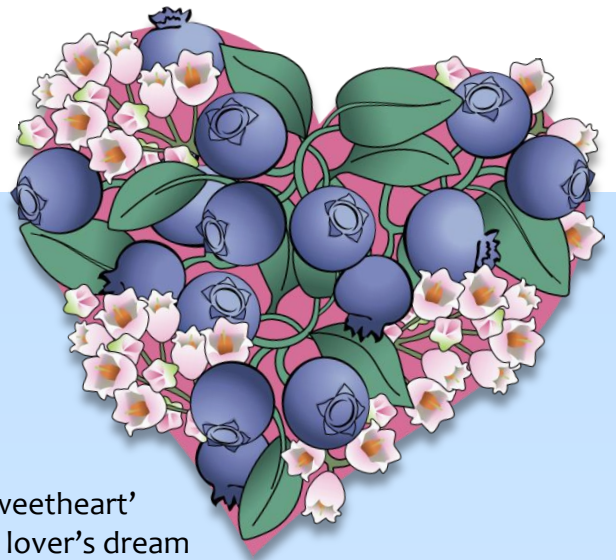


VACCINIUM *Sweetheart*

Two crops a year of plump, exceptionally sweet berries make this double-cropping variety twice as delightful!



ENJOY TWO CROPS A YEAR OF SUCCULENT, EXCEPTIONALLY SWEET BLUEBERRIES!



Vaccinium ‘Sweetheart’ is a blueberry lover’s dream come true, delivering not one, but two delicious crops of berries each year! This vigorous Northern-Southern cross produces a heavy crop of medium to large, deliciously sweet berries in late May to early June, and in milder climates, a second lighter crop at summer’s end. Uniquely-shaped white blossoms in early spring, give way to masses of frosty blue berries, each plant yielding up to 15 lbs. annually when mature. ‘Sweetheart’ is self-fertile, requiring no cross-pollinator to set fruit, however, if planted in proximity to other blueberry cultivars, it will likely set even more berries. Although technically a Northern Highbush, ‘Sweetheart’ flourishes from north to south, and is quite cold hardy, thriving with 750 to 800 chill hours. In cooler northern climates, plant ‘Sweetheart’ in full sun, afternoon or partial shade farther south and west. The bush is gorgeous, and will make a lovely addition to any landscape.

- WHITE FLOWERS IN EARLY SPRING
- EXCEPTIONALLY SWEET TASTING BERRIES
- HEAVY YIELDER – UP TO 15 LBS. YEARLY WHEN MATURE
- TWO CROPS OF BERRIES EACH YEAR
- SELF-POLLINATING
- COLD HARDY
- 5-6’H X 3-4’W
- FULL SUN TO PARTIAL SHADE
- LOAMY, WELL-DRAINED SOIL
- ZONES 4-8

BRIGGS NURSERY

Phone: (800) 444-1515

Fax: (888) 400-2380

sales@briggsnursery.com

www.briggsnursery.com



Quality that Grows™